

# ASTM A182

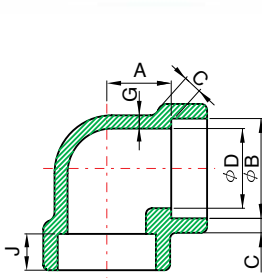
## STAINLESS HIGH PRESSURE FITTINGS INDEX

90° ELBOW / CROSS / TEE / 45° ELBOW - SOCKET.....	46
COUPLING / HALF COUPLING / CAP - SOCKET.....	47
90° ELBOW / CROSS / TEE / 45° ELBOW - THREADED.....	48
COUPLING / HALF COUPLING / CAP - THREADED.....	49
REDUCING COUPLING - SOCKET-WELD END.....	50
REDUCING COUPLING - THREADED END.....	51
SQUARE HEAD PLUG / HEX HEAD PLUG / ROUND HEAD PLUG / HEX HEAD BUSHING / FLUSH BUSHING.....	52
UNION - THREADED.....	53
UNION - SOCKET.....	54
HEX - NIPPLE.....	55
STREET ELBOW.....	56
REDUCER INSERT.....	57
THREADED END 90° BRANCH OUTLE .....	58
SOCKET WELDING END 90° BRANCH OUTLET.....	59
BUTT WELDING END 90° BRANCH OUTLET - STD.....	60
BUTT WELDING END 90° BRANCH OUTLET - XH .....	61
BUTT WELDING END 90° BRANCH OUTLET - SCH 160 & XXH .....	62
STANDARD PACKAGING QUANTITY FOR EACH CARTON .....	63
WEIGHT LIST.....	64

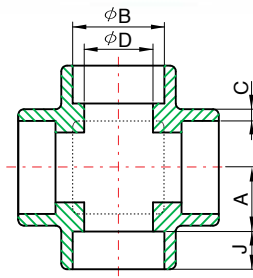


# ASTM A182 STAINLESS HIGH PRESSURE FITTINGS

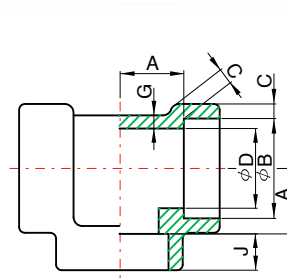
## 90° ELBOW / CROSS / TEE / 45° ELBOW - SOCKET



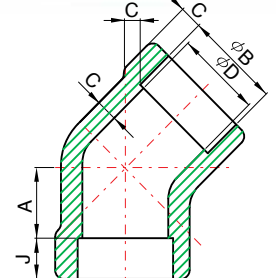
90° ELBOW



CROSS



TEE



45° ELBOW

### DIMENSIONS

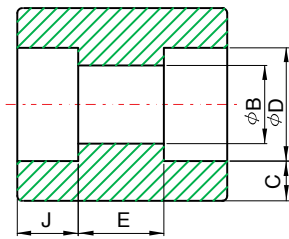
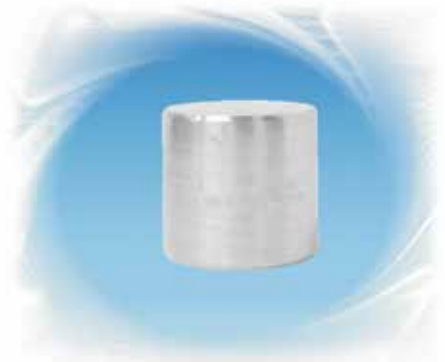
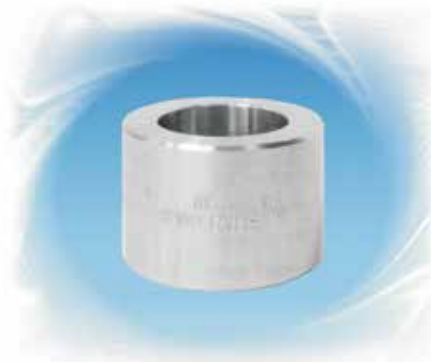
unit: inch

DN	Nom. Pipe Size	Socket Bore Dia. (2) B	Bore Diameter of Fitting (2) D		Socket Wall Thickness (1) C				Body Wall Thickness G		Depth of Socket Min. J
					Class Designation				Class Designation		
			Class Designation		3000		6000		3000	6000	
			3000	6000	Ave.	Min.	Ave.	Min.	Min.	Min.	
6	1/8	0.441 0.425	0.299 0.240	0.189 0.126	0.125	0.125	0.156	0.135	0.095	0.124	0.374
8	1/4	0.575 0.559	0.394 0.335	0.280 0.220	0.149	0.130	0.181	0.158	0.119	0.145	0.374
10	3/8	0.709 0.693	0.524 0.465	0.390 0.331	0.158	0.138	0.198	0.172	0.126	0.158	0.374
15	1/2	0.874 0.858	0.654 0.591	0.492 0.433	0.184	0.161	0.235	0.204	0.147	0.188	0.374
20	3/4	1.087 1.071	0.854 0.795	0.642 0.583	0.193	0.168	0.274	0.238	0.154	0.219	0.492
25	1	1.350 1.335	1.079 1.020	0.846 0.783	0.224	0.196	0.312	0.273	0.179	0.250	0.492
32	1-1/4	1.697 1.681	1.409 1.350	1.189 1.130	0.239	0.208	0.312	0.273	0.191	0.250	0.492
40	1-1/2	1.937 1.921	1.638 1.579	1.366 1.307	0.250	0.218	0.351	0.307	0.200	0.281	0.492
50	2	2.429 2.409	2.098 2.035	1.717 1.657	0.273	0.238	0.430	0.374	0.218	0.344	0.630
65	2-1/2	2.929 2.909	2.528 2.409		0.345	0.302			0.276		0.630
80	3	3.555 3.535	3.126 3.008		0.375	0.327			0.300		0.630
100	4	4.555 4.535	4.087 3.965		0.421	0.368			0.377		0.748

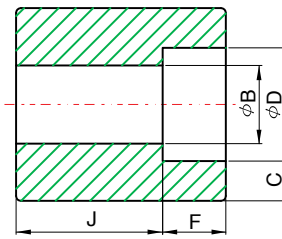


# ASTM A182 STAINLESS HIGH PRESSURE FITTINGS

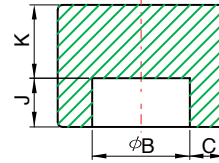
## COUPLING / HALF COUPLING / CAP - SOCKET



COUPLING



HALF COUPLING



CAP

### DIMENSIONS

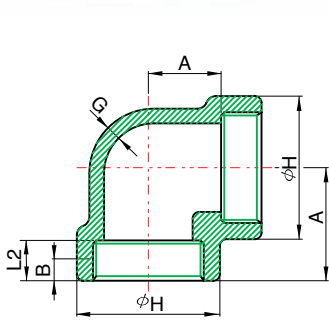
unit: inch

Center to Bottom of Socket-A				Laying Lengths		Tolerances ±			End Wall Thickness K Min.		Nom. Pipe Size	DN
90° Elbows Tees, Crosses		45° Elbows		Couplings E	Half Couplings F	A	E	F	Class Designation			
Class Designation	Class Designation	3000	6000						3000	6000	3000	6000
0.433	0.433	0.315	0.315	0.256	0.630	0.039	0.059	0.039	0.189	0.252	1/8	6
0.433	0.531	0.315	0.315	0.256	0.630	0.039	0.059	0.039	0.189	0.252	1/4	8
0.531	0.610	0.315	0.433	0.256	0.689	0.059	0.118	0.059	0.189	0.252	3/8	10
0.610	0.748	0.433	0.492	0.374	0.886	0.059	0.118	0.059	0.252	0.311	1/2	15
0.748	0.886	0.512	0.551	0.374	0.945	0.059	0.118	0.059	0.252	0.311	3/4	20
0.886	1.063	0.551	0.689	0.492	1.122	0.079	0.157	0.079	0.378	0.441	1	25
1.063	1.260	0.689	0.807	0.492	1.181	0.079	0.157	0.079	0.378	0.441	1-1/4	32
1.260	1.496	0.807	1.004	0.492	1.260	0.079	0.157	0.079	0.441	0.500	1-1/2	40
1.496	1.614	1.004	1.122	0.748	1.614	0.079	0.157	0.079	0.500	0.618	2	50
1.614		1.122		0.748	1.693	0.098	0.197	0.098	0.618	0.748	2-1/2	65
2.244		1.260		0.748	1.752	0.098	0.197	0.098	0.748	0.882	3	80
2.618		1.614		0.748	1.890	0.098	0.197	0.098	0.882	1.118	4	100

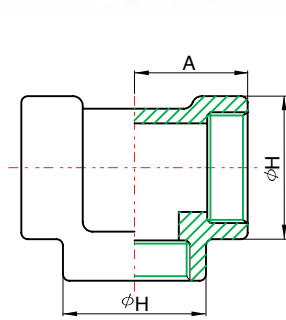


# ASTM A182 STAINLESS HIGH PRESSURE FITTINGS

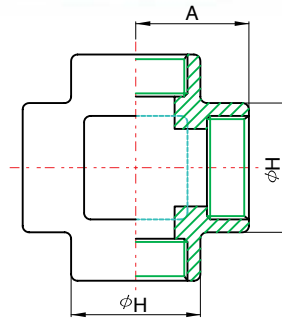
## 90° ELBOW / CROSS / TEE / 45° ELBOW - THREADED



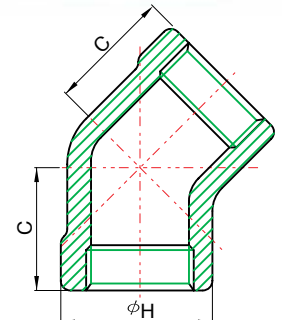
90°ELBOW



TEE



CROSS



45°ELBOW

### DIMENSIONS

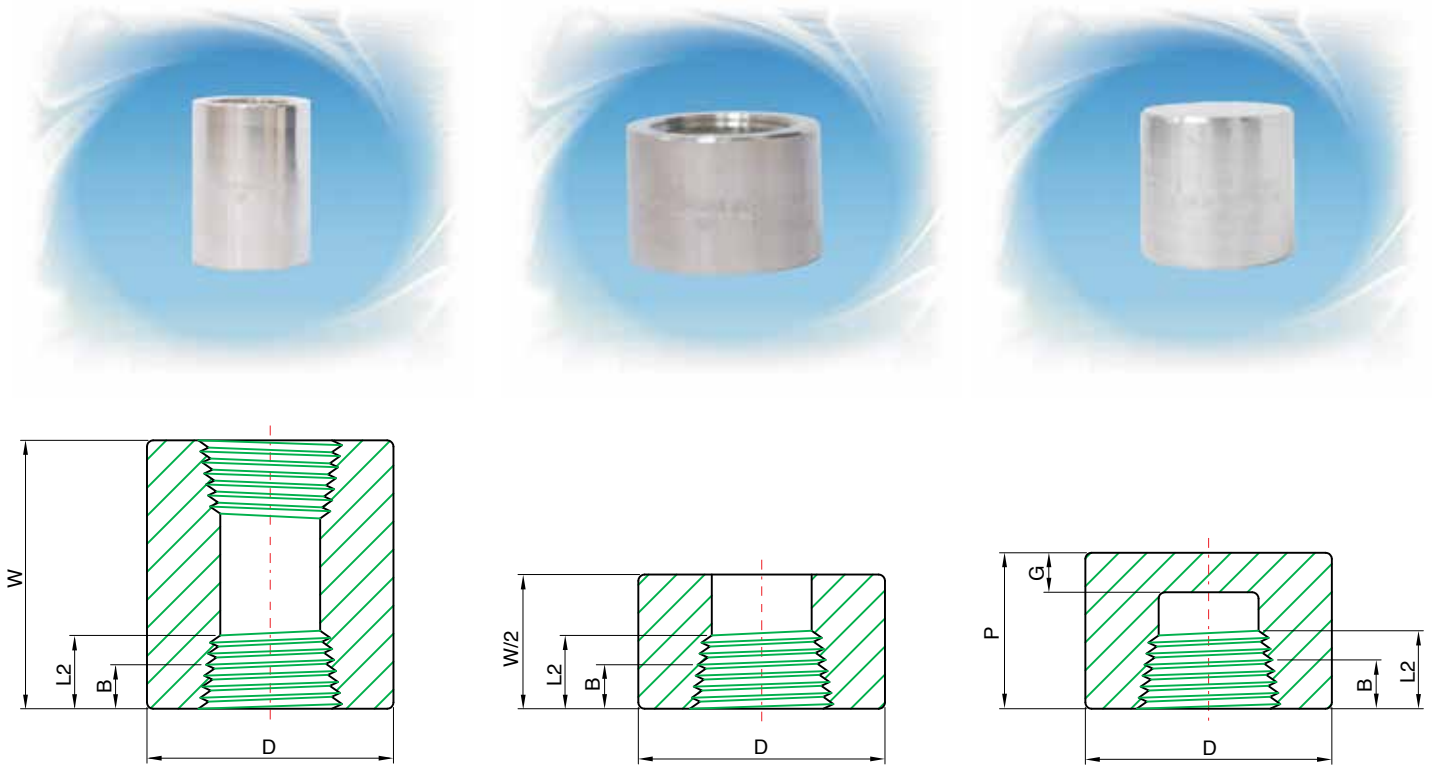
unit: inch

DN	Nom. Pipe Size	Center to End Elbows, Tees, Cross A		Center to End 45° Elbow C		Outside Diameter of Band H		Minimum Wall Thickness G		Length of Thread. Min. (1)	
		3000	6000	3000	6000	3000	6000	3000	6000	B	L2
6	1/8	0.827	0.984	0.669	0.748	0.866	0.984	0.125	0.250	0.252	0.264
8	1/4	0.984	1.102	0.748	0.866	0.984	1.299	0.130	0.260	0.319	0.402
10	3/8	1.102	1.299	0.866	0.984	1.299	1.496	0.138	0.275	0.358	0.409
15	1/2	1.299	1.496	0.984	1.102	1.496	1.811	0.161	0.321	0.429	0.535
20	3/4	1.496	1.732	1.102	1.299	1.811	2.205	0.170	0.336	0.500	0.547
25	1	1.732	2.008	1.299	1.378	2.205	2.441	0.196	0.391	0.579	0.681
32	1-1/4	2.008	2.362	1.378	1.693	2.441	2.953	0.208	0.417	0.669	0.709
40	1-1/2	2.362	2.520	1.693	1.732	2.953	3.307	0.219	0.436	0.701	0.724
50	2	2.520	3.268	1.732	2.047	3.307	4.016	0.281	0.476	0.748	0.756
65	2-1/2	3.268	3.740	2.047	2.520	4.016	4.764	0.301	0.602	0.929	1.138
80	3	3.740	4.173	2.520	3.110	4.764	5.748	0.348	0.655	1.020	1.201
100	4	4.488	4.488	3.110	3.110	5.984	5.984	0.440	0.735	1.091	1.299



# ASTM A182 STAINLESS HIGH PRESSURE FITTINGS

## COUPLING / HALF COUPLING / CAP - THREADED



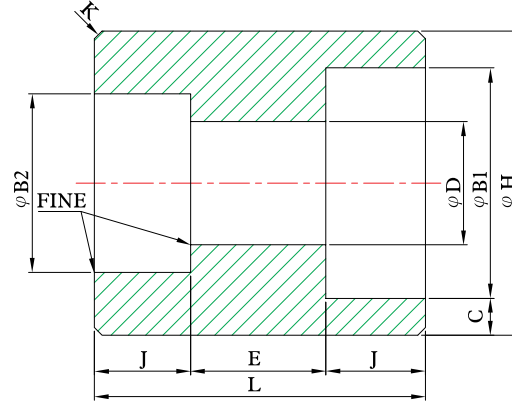
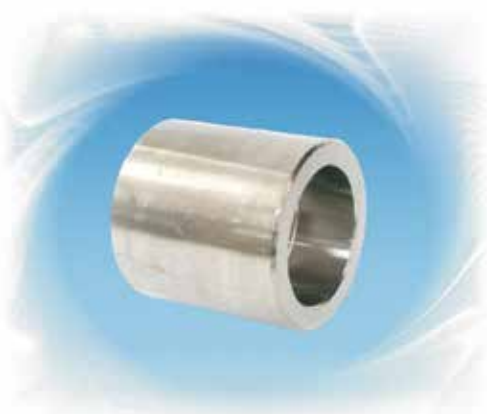
### DIMENSIONS

unit: inch

DN	Nom. Pipe Size	End to End Couplings W	End to End Caps P		Outside Diameter D		End Wall Thickness G Min.		Length of Thread. Min. (1)	
		3000 / 6000	3000	6000	3000	6000	3000	6000	B	L2
6	1/8	1.260	0.748	-----	0.630	0.866	0.189	-----	0.252	0.264
8	1/4	1.378	0.984	1.063	0.748	0.984	0.189	0.252	0.319	0.402
10	3/8	1.496	0.984	1.063	0.866	1.260	0.189	0.252	0.358	0.409
15	1/2	1.890	1.260	1.299	1.102	1.496	0.252	0.311	0.429	0.535
20	3/4	2.008	1.457	1.496	1.378	1.732	0.252	0.311	0.500	0.547
25	1	2.362	1.614	1.693	1.732	2.244	0.382	0.441	0.579	0.681
32	1-1/4	2.638	1.732	1.811	2.244	2.520	0.382	0.441	0.669	0.709
40	1-1/2	3.110	1.732	1.890	2.520	2.992	0.441	0.500	0.701	0.724
50	2	3.386	1.890	2.008	2.992	3.622	0.500	0.618	0.748	0.756
65	2-1/2	3.622	2.362	2.520	3.622	4.252	0.618	0.748	0.929	1.138
80	3	4.252	2.559	2.677	4.252	5.000	0.748	0.882	1.020	1.201
100	4	4.764	2.677	2.953	5.512	6.260	0.882	1.118	1.091	1.299

# ASTM A182 STAINLESS HIGH PRESSURE FITTINGS

## REDUCING COUPLING - SOCKET-WELD END



### DIMENSIONS

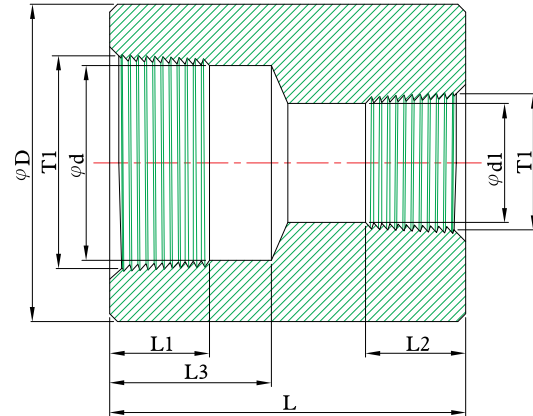
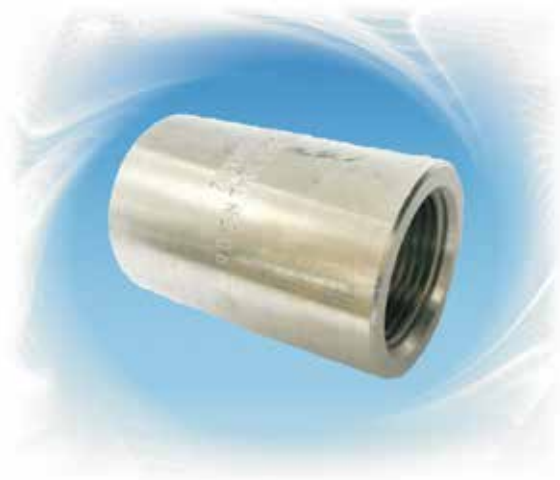
unit: inch

SIZE	B1	B2	D	C (Min)	H (Min)	J	E	L
1/4 x 1/8	0.56	0.43	0.27	0.15	0.86	0.41	0.26	1.08
3/8 x 1/8	0.70	0.43	0.27	0.16	1.02	0.41	0.26	1.12
3/8 x 1/4	0.70	0.56	0.37	0.16	1.02	0.41	0.26	1.12
1/2 x 1/8	0.86	0.43	0.27	1.23	1.23	0.49	0.37	1.36
1/2 x 1/4	0.11	0.56	0.37	1.23	1.23	0.49	0.37	1.36
1/2 x 3/8	0.86	0.70	0.50	1.23	1.23	0.49	0.37	1.36
3/4 x 1/8	1.07	0.43	0.27	1.46	1.46	0.55	0.37	1.48
3/4 x 1/4	1.07	0.56	0.37	1.46	1.46	0.55	0.37	1.48
3/4 x 3/8	1.07	0.70	5.00	1.46	1.46	0.55	0.37	1.48
3/4 x 1/2	1.07	0.86	0.62	1.46	1.46	0.55	0.37	1.48
1 x 1/8	1.34	0.43	0.27	1.79	1.79	0.59	0.49	1.69
1 x 1/4	1.34	0.56	0.37	1.79	1.79	0.59	0.49	1.69
1 x 3/8	1.34	0.70	0.50	1.79	1.79	0.59	0.49	1.69
1 x 1/2	1.34	0.86	0.62	1.79	1.79	0.59	0.49	1.69
1 x 3/4	1.34	1.07	0.83	0.24	1.79	0.59	0.49	1.69
1-1/4 x 18	1.69	0.43	0.27	0.24	2.17	0.67	0.49	1.85
1-1/4 x 14	1.69	0.56	0.37	0.24	2.17	0.67	0.49	1.85
1-1/4 x 3/8	1.69	0.70	0.50	0.24	2.17	0.67	0.49	1.85
1-1/4 x 12	1.69	0.86	0.62	0.24	2.17	0.67	0.49	1.85
1-1/4 x 3/4	1.69	1.07	0.83	0.24	2.17	0.67	0.49	1.85
1-1/4 x 1	1.69	1.34	1.05	0.24	2.17	0.67	0.49	1.85
1-1/2 x 1/8	1.93	0.43	0.27	0.25	2.43	0.69	0.49	1.89
1-1/2 x 1/4	1.93	0.56	0.37	0.25	2.43	0.69	0.49	1.89
1-1/2 x 3/8	1.93	0.70	0.50	0.25	2.43	0.69	0.49	1.89
1-1/2 x 1/2	1.93	0.86	0.62	0.25	2.43	0.69	0.49	1.89
1-1/2 x 3/4	1.93	1.07	0.83	0.25	2.43	0.69	0.49	1.89
1-1/2 x 1	1.93	1.34	1.05	0.25	2.43	0.69	0.49	1.89
1-1/2 x 1-1/4	1.93	1.69	1.38	0.25	2.43	0.69	0.49	1.89
2 x 1/8	2.42	0.43	0.27	0.27	2.96	0.87	0.75	2.48
2x 1/4	2.42	0.56	0.37	0.27	2.96	0.87	0.75	2.48
2 x 3/8	2.42	0.70	0.50	0.27	2.96	0.87	0.75	2.48
2 x 1/2	2.42	0.86	0.62	0.27	2.96	0.87	0.75	2.48
2 x 3/4	2.42	1.07	0.83	0.27	2.96	0.87	0.75	2.48
2 x 1	2.42	1.34	1.05	0.27	2.96	0.87	0.75	2.48
2 x 1-1/4	2.42	1.69	1.38	0.27	2.96	0.87	0.75	2.48
2 x1-1/2	2.42	1.93	1.61	0.27	2.96	0.87	0.75	2.48
2-1/2 x 1-1/4	2.92	1.69	1.38	0.35	3.61	0.87	0.75	2.48
2-1/2 x 1-1/2	2.92	1.93	1.61	0.35	3.61	0.87	0.75	2.48
2-1/2 x 2	2.92	2.42	2.07	0.35	3.61	0.87	0.75	2.48
3 x 1-1/2	3.54	1.93	1.61	0.38	4.30	0.87	0.75	2.48
3 x 2	3.54	2.42	2.07	0.38	4.30	0.87	0.75	2.48
3 x 2-1/2	3.54	2.92	2.47	0.38	4.30	0.87	0.75	2.48
4 x 2	4.54	2.42	2.07	0.42	5.39	0.87	0.75	2.48
4 x 2-1/2	4.54	2.92	2.47	0.42	5.39	0.87	0.75	2.48
4 x 3	4.54	3.54	3.07	0.42	5.39	0.87	0.75	2.48



# ASTM A182 STAINLESS HIGH PRESSURE FITTINGS

## REDUCING COUPLING - THREADED END



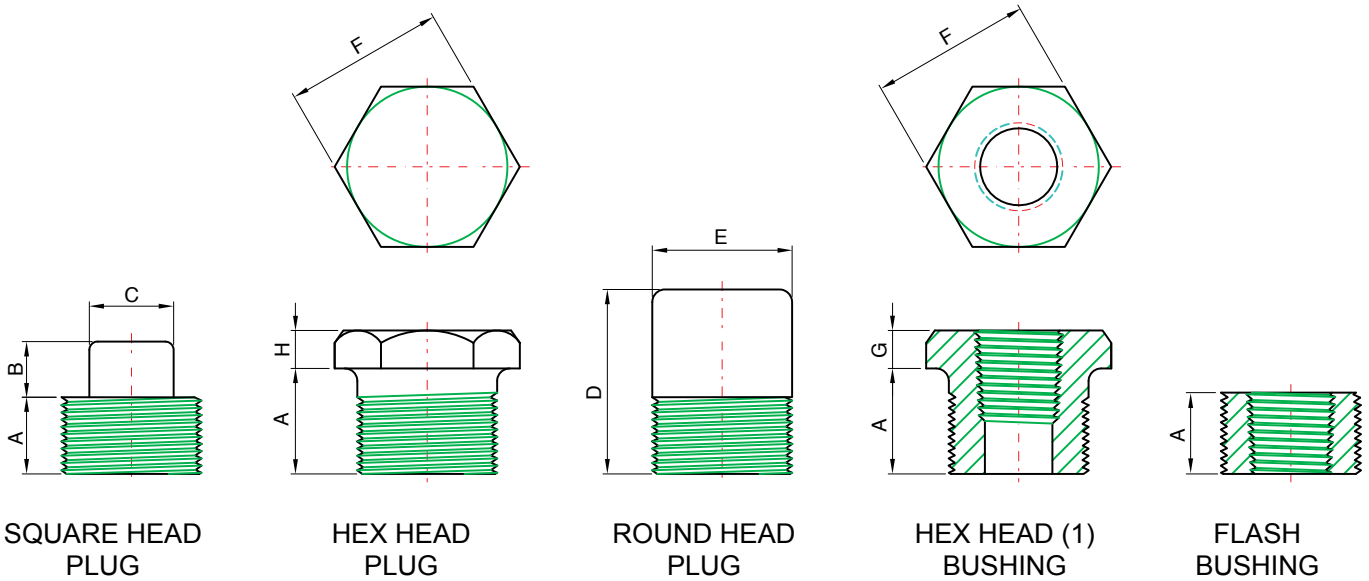
### DIMENSIONS

unit: inch

SIZE	T1-n	T2-n	L	D	d	d1	L1	L2	L3
1/4 x 1/8	0.71	1.06	1.38	0.75	0.44	0.32	0.50	0.35	0.69
3/8 x 1/8	0.71	1.06	1.50	0.87	0.57	0.32	0.52	0.35	0.75
3/8 x 1/4	0.71	0.71	1.50	0.87	0.57	0.44	0.52	0.50	0.75
1/2 x 1/4	0.55	0.71	1.89	1.10	0.68	0.44	0.68	0.50	0.94
1/2 x 3/8	0.55	0.71	1.89	1.10	0.68	0.57	0.68	0.52	0.94
3/4 x 3/8	0.55	0.71	2.01	1.38	0.89	0.57	0.70	0.52	1.00
3/4 x 1/2	0.55	0.55	2.01	1.38	0.89	0.68	0.70	0.68	1.00
1 x 3/8	0.45	0.71	2.36	1.73	1.12	0.57	0.83	0.52	1.18
1 x 1/2	0.45	0.55	2.36	1.73	1.12	0.68	0.83	0.68	1.18
1 x 3/4	0.45	0.55	2.36	1.73	1.12	0.89	0.83	0.70	1.18
1-1/4 x 1/2	0.45	0.55	2.64	2.24	1.46	0.68	0.85	0.68	1.32
1-1/4 x 3/4	0.45	0.55	2.64	2.24	1.46	0.89	0.85	0.70	1.32
1-1/4 x 1	0.45	0.45	2.64	2.24	1.46	1.12	0.85	0.83	1.32
1-1/2 x 3/2	0.45	0.55	3.11	2.52	1.70	0.68	0.85	0.68	1.56
1-1/2 x 3/4	0.45	0.55	3.11	2.52	1.70	0.89	0.85	0.70	1.56
1-1/2 x 1	0.45	0.45	3.11	2.52	1.70	1.12	0.85	0.83	1.56
1-1/2 x 1-1/4	0.45	0.45	3.11	2.52	1.70	1.46	0.85	0.85	1.56
2 x 3/4	0.45	0.55	3.39	2.99	2.17	0.89	0.87	0.70	1.69
2 x 1	0.45	0.45	3.39	2.99	2.17	1.12	0.87	0.83	1.69
2 x 1-1/4	0.45	0.45	3.39	2.99	2.17	1.46	0.87	0.85	1.69
2-1/2 x 1/2	0.45	0.45	3.39	2.99	2.17	1.70	0.87	0.85	1.69
2-1/2 x 1	0.31	0.45	3.62	3.62	2.58	1.12	1.18	0.83	1.81
2-1/2 x 1-1/4	0.31	0.45	3.62	3.62	2.58	1.46	1.18	0.85	1.81
2-1/2 x 1-1/2	0.31	0.45	3.62	3.62	2.58	1.70	1.18	0.85	1.81
2-1/2 x 2	0.31	0.45	3.62	3.62	2.58	2.17	1.18	0.87	1.81
3 x 1	0.31	0.45	4.25	4.25	3.21	1.12	1.27	0.83	2.13
3 x 1-1/4	0.31	0.45	4.25	4.25	3.21	1.46	1.27	0.85	2.13
3 x 1-1/2	0.31	0.45	4.25	4.25	3.21	1.70	1.27	0.85	2.13
3 x 2	0.31	0.45	4.25	4.25	3.21	2.17	1.27	0.87	2.13
3 x 2-1/2	0.31	0.31	4.25	4.25	3.21	2.58	1.27	1.18	2.13
4 x 1-1/4	0.31	0.45	4.76	5.51	4.20	1.46	1.34	0.85	2.38
4 x 1-1/2	0.31	0.45	4.76	5.51	4.20	1.70	1.34	0.85	2.38
4 x 2	0.31	0.45	4.76	5.51	4.20	2.17	1.34	0.87	2.38
4 x 2-1/2	0.31	0.31	4.76	5.51	4.20	2.58	1.34	1.18	2.38

# ASTM A182 STAINLESS HIGH PRESSURE FITTINGS

## SQUARE HEAD PLUG / HEX HEAD PLUG / ROUND HEAD PLUG / HEX HEAD BUSHING / FLUSH BUSHING



### DIMENSIONS

unit: inch

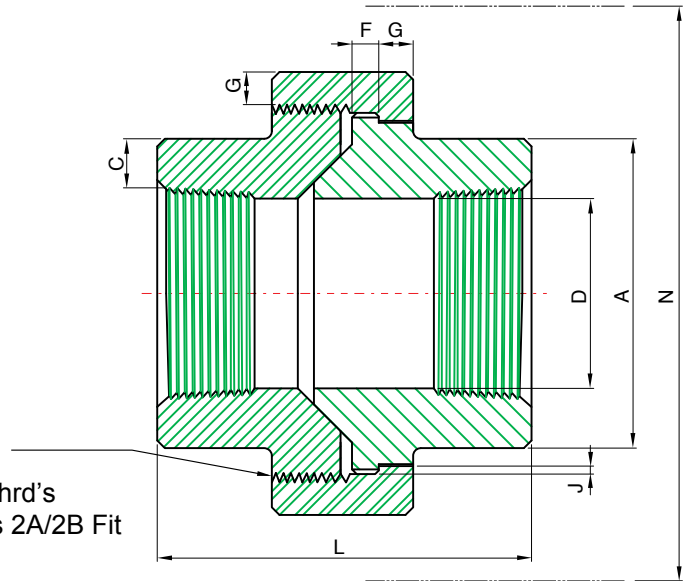
DN	Nom. Pipe Size	Length (Min.) A	Plugs Square Head		Plugs Round Head		Hex Plugs & Bushings		
			Height of Square (Min.) B	Width Flats (Min.) C	Nominal Diameter of Head E	Length (Min.) D	Width Flats (Nom.) F	Hex Height (Min.)	
								Bushing G	Plug H
6	1/8	0.394	0.236	0.276	0.394	1.378	0.433	----	0.236
8	1/4	0.433	0.236	0.394	0.551	1.614	0.630	0.118	0.236
10	3/8	0.512	0.315	0.433	0.709	1.614	0.709	0.157	0.315
15	1/2	0.551	0.394	0.551	0.827	1.732	0.866	0.197	0.315
20	3/4	0.630	0.433	0.630	1.063	1.732	1.063	0.236	0.394
25	1	0.748	0.512	0.827	1.299	2.008	1.417	0.236	0.394
32	1-1/4	0.827	0.551	0.945	1.693	2.008	1.811	0.276	0.551
40	1-1/2	0.827	0.630	1.102	1.890	2.008	1.969	0.315	0.630
50	2	0.866	0.709	1.260	2.362	2.520	2.559	0.354	0.709
65	2-1/2	1.063	0.748	1.417	2.874	2.756	2.953	0.394	0.748
80	3	1.102	0.827	1.614	3.504	2.756	3.543	0.394	0.827
100	4	1.260	0.984	2.559	4.488	2.992	4.528	0.512	0.984





# ASTM A182 STAINLESS HIGH PRESSURE FITTINGS

## UNION - THREADED



H-Thrd's  
Minimum 4 Full Thrd's  
Engagement Class 2A/2B Fit

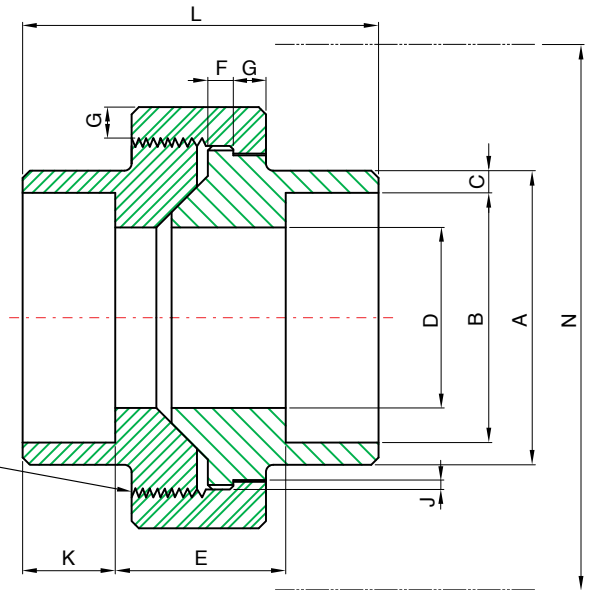
### DIMENSIONS

unit: inch

Nom. Pipe Size	Pipe End Min. A	Wall Min. C	Water Way Bore D	Male Flange Min. F	Nut Min. G	Thrds. Per 25.4mm Max. H	Bearing Min. J	Length Assem. L	Clear Assem. Nut N
1/8	0.579	0.095	0.269 0.253	0.125	0.126	0.630	0.049	1.630	1.929
1/4	0.748	0.119	0.388 0.372	0.125	0.126	0.630	0.049	1.630	1.929
3/8	0.902	0.126	0.548 0.532	0.135	0.134	0.551	0.054	1.811	2.165
1/2	1.091	0.147	0.688 0.672	0.145	0.146	0.551	0.059	1.929	2.244
3/4	1.319	0.154	0.858 0.842	0.160	0.161	0.433	0.066	2.240	2.638
1	1.630	0.179	1.108 1.092	0.180	0.173	0.433	0.073	2.441	3.110
1-1/4	1.988	0.191	1.408 1.392	0.210	0.205	0.433	0.084	2.799	3.701
1-1/2	2.252	0.200	1.638 1.622	0.230	0.220	0.394	0.091	3.008	4.370
2	2.760	0.218	2.068 2.052	0.260	0.252	0.394	0.106	3.390	5.197
2-1/2	3.358	0.276	2.548 2.532	0.295	0.280	0.315	0.121	4.031	5.827
3	4.031	0.300	3.058 3.042	0.325	0.315	0.315	0.139	4.291	6.890

# ASTM A182 STAINLESS HIGH PRESSURE FITTINGS

## UNION - SOCKET



H-Thrd's  
Minimum 4 Full Thrd's  
Engagement Class 2A/2B Fit

### DIMENSIONS

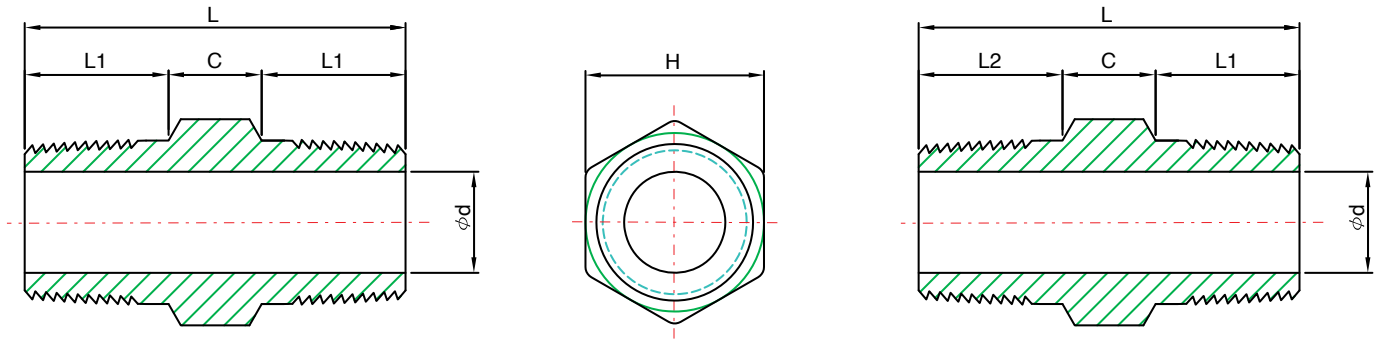
unit: inch

Nom. Pipe Size	Pipe End	Socket Bore Dia.	Socket Wall	Water Way Bore	Laying Length	Male Flange	Nut	Thrds. Per 25.4mm	Bearing	Depth of Socket	Length Assem. Nom.	Clear Assem. Nut
	Min. A	B	Min. C	D	E	Min. F	Min. G	Max. H	Min. J	Min. K	L	N
1/8	0.858	0.430 0.420	0.125	0.269 0.253	0.882 0.748	0.125	0.125	0.630	0.049	0.378	1.630	1.929
1/4	0.858	0.560 0.550	0.130	0.388 0.372	0.882 0.748	0.125	0.125	0.630	0.049	0.378	1.630	1.929
3/8	1.020	0.700 0.690	0.137	0.548 0.532	1.059 0.811	0.135	0.135	0.551	0.054	0.378	1.811	2.165
1/2	1.228	0.860 0.850	0.160	0.688 0.672	1.059 0.811	0.145	0.145	0.551	0.059	0.378	1.929	2.244
3/4	1.461	1.070 1.060	0.168	0.858 0.842	1.252 1.000	0.160	0.160	0.433	0.066	0.500	2.240	2.638
1	1.791	1.340 1.330	0.195	1.108 1.092	1.350 1.031	0.180	0.175	0.433	0.073	0.500	2.441	3.110
1-1/4	2.161	1.680 1.670	0.208	1.408 1.392	1.598 1.280	0.210	0.205	0.433	0.084	0.500	2.799	3.701
1-1/2	2.421	1.920 1.910	0.218	1.638 1.622	1.661 1.339	0.230	0.220	0.394	0.091	0.500	3.012	4.370
2	2.961	2.420 2.410	0.238	2.068 2.052	1.791 1.469	0.260	0.250	0.394	0.106	0.622	3.390	5.197
2-1/2	3.610	2.920 2.900	0.301	2.548 2.532	2.429 2.051	0.295	0.280	0.315	0.121	0.622	4.031	5.827
3	4.299	3.058 3.042	0.327	3.058 3.042	2.512 2.110	0.325	0.315	0.315	0.139	0.622	4.291	6.890



# ASTM A182 STAINLESS HIGH PRESSURE FITTINGS

## HEX - NIPPLE



### DIMENSIONS

unit: inch / lb

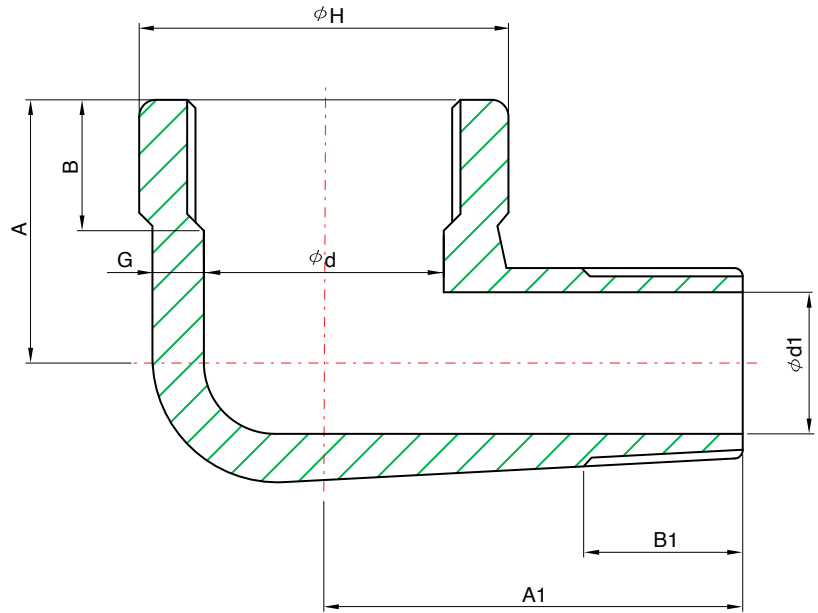
Size NPS	C	L1	L	d	H	Unit Weight in Kgs
1/8	0.236	0.394	1.024	0.157	0.472	0.03
1/4	0.315	0.551	1.417	0.264	0.669	0.04
3/8	0.315	0.551	1.417	0.350	0.748	0.05
1/2	0.354	0.748	1.850	0.469	0.945	0.09
3/4	0.394	0.748	1.890	0.630	1.181	0.15
1	0.433	0.945	2.323	0.791	1.378	0.27
1-1/4	0.472	0.945	2.362	1.098	1.811	0.45
1-1/2	0.551	0.945	2.441	1.260	1.969	0.62
2	0.630	1.024	2.677	1.571	2.559	1.03
2-1/2	0.709	1.496	3.701	2.169	3.150	1.51
3	0.787	1.575	3.937	2.559	3.740	2.22
4	0.965	1.575	4.134	3.346	4.941	4.00

unit: inch / lb

Size NPS	C	L1	L2	L	d	H	Unit Weight in Kgs
3/8 X 1/4	0.315	0.551	0.551	1.417	0.264	0.748	0.05
1/2 X 1/4	0.354	0.748	0.551	1.654	0.264	0.945	0.09
1/2 X 3/8	0.354	0.748	0.551	1.654	0.350	0.945	0.09
3/4 X 1/4	0.394	0.748	0.551	1.693	0.264	1.181	0.15
3/4 X 3/8	0.394	0.748	0.551	1.693	0.350	1.181	0.15
3/4 X 1/2	0.394	0.748	0.748	1.890	0.469	1.181	0.15
1 X 3/8	0.433	0.945	0.551	1.929	0.350	1.339	0.27
1 X 1/2	0.433	0.945	0.748	2.126	0.469	1.339	0.27
1 X 3/4	0.433	0.945	0.748	2.126	0.630	1.339	0.27
1-1/4 X 1/2	0.472	0.945	0.748	2.165	0.469	1.811	0.45
1-1/4 X 3/4	0.472	0.945	0.748	2.165	0.630	1.811	0.45
1-1/4 X 1	0.472	0.945	0.945	2.362	0.791	1.811	0.45
1-1/2 X 3/4	0.551	0.945	0.748	2.244	0.630	1.969	0.62
1-1/2 X 1	0.551	0.945	0.945	2.441	0.791	1.969	0.62
1-1/2 X 1-1/4	0.551	0.945	0.945	2.441	1.098	1.969	0.62
2 X 1	0.630	1.024	0.945	2.598	0.791	2.559	1.03
2 X 1-1/4	0.630	1.024	0.945	2.598	1.098	2.559	1.03
2 X 1-1/2	0.630	1.024	0.945	2.598	1.260	2.559	1.03
2-1/2 X 1-1/4	0.709	1.496	0.945	3.150	1.098	3.150	1.51
2-1/2 X 1-1/2	0.709	1.496	0.945	3.150	1.260	3.150	1.51
2-1/2 X 2	0.709	1.496	1.024	3.228	1.571	3.150	1.51
3 X 1-1/2	0.787	1.575	0.945	3.307	1.260	3.740	2.22
3 X 2	0.787	1.575	1.024	3.386	1.571	3.740	2.22
3 X 2-1/2	0.787	1.575	1.496	3.858	2.169	3.740	2.22

# ASTM A182 STAINLESS HIGH PRESSURE FITTINGS

## STREET ELBOW



### DIMENSIONS

#### 3000LBS

unit: inch

Dim Nom. Pipe Size	H	A	A1	d	d1	G (Min)	B (Min)	B1 (Min) (min)
1/4	0.984	0.874	1.248	0.441	0.276	0.130	0.315	0.406
3/8	1.299	1.000	1.500	0.571	0.354	0.138	0.354	0.409
1/2	1.496	1.126	1.622	0.618	0.512	0.161	0.433	0.535
3/4	1.811	1.374	1.874	0.823	0.630	0.170	0.492	0.543
1	2.205	1.752	2.268	1.047	0.787	0.196	0.571	0.681
1-1/4	2.441	2.000	2.626	1.378	1.102	0.208	0.669	0.709
1-1/2	2.953	2.126	2.811	1.610	1.181	0.219	0.709	0.724
2	3.307	2.500	3.307	2.067	1.575	0.281	0.748	0.760

#### 6000LBS

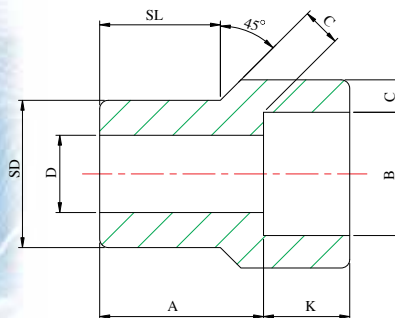
unit: inch

Dim Nom. Pipe Size	H	A	A1	d	d1	G (min)	B (min)	B1 (min)
1/4	1.299	1.000	1.500	0.441	0.118	0.260	0.315	0.406
3/8	1.496	1.126	1.622	0.571	0.185	0.275	0.354	0.409
1/2	1.811	1.374	1.874	0.618	0.248	0.321	0.433	0.535
3/4	2.205	1.752	2.252	0.823	0.437	0.336	0.492	0.543
1	2.441	2.000	2.626	1.047	0.598	0.391	0.571	0.681
1-1/4	2.441	2.000	2.626	1.378	1.102	0.208	0.669	0.709
1-1/2	3.307	2.500	3.307	1.610	1.098	0.436	0.709	0.724

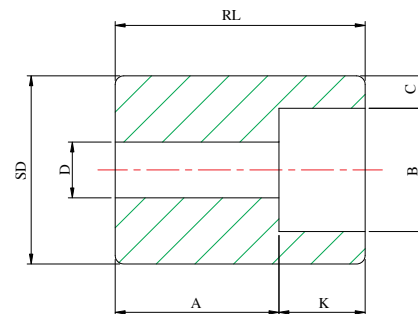


# ASTM A182 STAINLESS HIGH PRESSURE FITTINGS

## REDUCER INSERT



TYPE 1



TYPE 2<sup>(1)</sup>

## DIMENSIONS

unit: inch

Nom. Pipe Size	Type (2)		Socket		Shank Dia. SD	Laying Length A		Bore D		Wall (Min) C		Length			
			Dia.	Depth (Min)		3M	6M	3M	6M	3M	6M	SL		RL (Min)	
	B	K	3M	6M								3M	6M	3M	6M
3/8 X 1/4	1	1	0.56	0.39	0.68	0.75	0.83	0.35	0.26	0.15	0.18	0.55	0.63	-	-
1/2 X 3/8	1	1	0.70	0.39	0.84	0.83	0.91	0.49	0.35	0.16	0.20	0.63	0.63	-	-
1/2 X 1/4	1	1	0.56	0.39	0.84	0.83	0.83	0.35	0.26	0.15	0.18	0.63	0.63	-	-
3/4 X 1/2	1	1	0.86	0.39	1.05	0.87	0.98	0.63	0.47	0.18	0.24	0.67	0.75	-	-
3/4 X 3/8	2	1	0.70	0.39	1.05	0.63	0.87	0.49	0.35	0.16	0.20	-	0.75	1.06	-
3/4 X 1/4	2	2	0.56	0.39	1.05	0.71	0.87	0.35	0.26	0.15	0.18	-	-	1.06	1.26
1 X 3/4	1	1	1.08	0.51	1.31	0.94	1.10	0.83	0.61	0.19	0.27	0.75	0.83	-	-
1 X 1/2	2	1	0.86	0.39	1.31	0.63	1.10	0.63	0.47	0.18	0.24	-	0.83	1.10	-
1 X 3/8	2	2	0.70	0.39	1.31	0.71	0.87	0.49	0.35	0.16	0.20	-	-	1.10	1.30
1 X 1/4	2	2	0.56	0.39	1.31	0.75	0.94	0.35	0.26	0.15	0.18	-	-	1.10	1.30
1-1/4 X 1	1	1	1.34	0.51	1.66	0.98	1.18	1.04	0.81	0.22	0.31	0.83	0.87	-	-
1-1/4 X 3/4	2	2	1.08	0.51	1.66	0.71	0.83	0.83	0.61	0.19	0.27	-	-	1.26	1.38
1-1/4 X 1/2	2	2	0.86	0.39	1.66	0.75	0.87	0.63	0.47	0.18	0.24	-	-	1.26	1.38
1-1/4 X 3/8	2	2	0.70	0.39	1.66	0.83	0.94	0.49	0.35	0.16	0.20	-	-	1.26	1.38
1-1/4 X 1/4	2	2	0.56	0.39	1.66	0.87	0.98	0.35	0.26	0.15	0.18	-	-	1.26	1.38
1-1/2 X 1-1/4	1	1	1.69	0.51	1.90	1.10	1.38	1.38	1.15	0.24	0.31	0.87	0.98	-	-
1-1/2 X 1	2	1	1.34	0.51	1.90	0.71	1.13	1.04	0.81	0.22	0.31	-	0.98	1.30	-
1-1/2 X 3/4	2	2	1.08	0.51	1.90	0.75	0.98	0.83	0.61	0.19	0.27	-	-	1.30	1.57
1-1/2 X 1/2	2	2	0.86	0.39	1.90	0.83	1.06	0.63	0.47	0.18	0.24	-	-	1.30	1.57
1-1/2 X 3/8	2	2	0.70	0.39	1.90	0.87	1.10	0.49	0.35	0.16	0.20	-	-	1.30	1.57
2 X 1-1/2	1	1	1.93	0.51	2.38	1.26	1.54	1.61	1.34	0.25	0.35	0.98	1.10	-	-
2 X 1-1/4	2	2	1.69	0.51	2.38	0.83	0.94	1.38	1.15	0.24	0.31	-	-	1.50	1.61
2 X 1	2	2	1.34	0.51	2.38	0.87	0.98	1.04	0.83	0.22	0.31	-	-	1.50	1.61
2 X 3/4	2	2	1.08	0.51	2.38	0.94	1.06	0.83	0.61	0.19	0.27	-	-	1.50	1.61
2 X 1/2	2	2	0.86	0.39	2.37	0.98	1.10	0.62	0.47	0.18	0.23	-	-	1.50	1.61

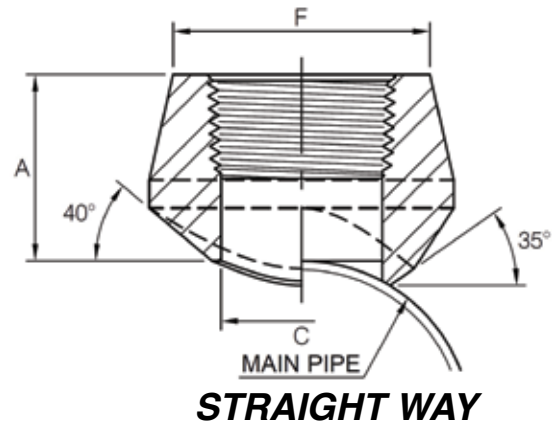
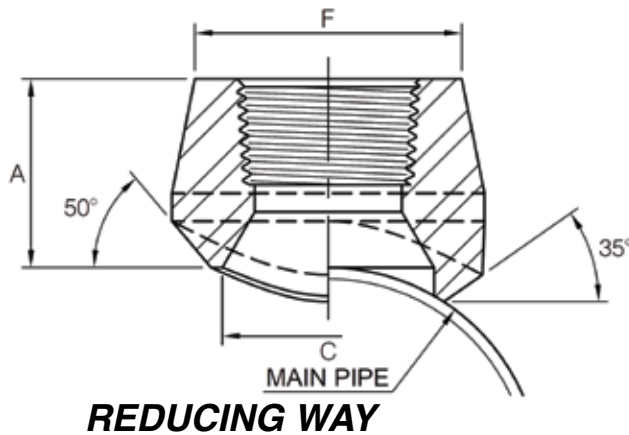
1. At the option of the manufacturer type 2 Reducers may be furnished in type 1 configuration.  
 2. 3M & 6M symbols 3000 and 6000 classes.



# ASTM A182 STAINLESS HIGH PRESSURE FITTINGS

## THREADED END 90° BRANCH OUTLET

 **BOTH-WELL STEEL FITTINGS CO., LTD**  
MSS SP-97-2019



unit: inch

Reducing way			
OutLet Pipe (in)	A	C	F
<b>3000Lb</b>			
1/8	0.748	0.539	0.681
1/4	0.748	0.539	0.866
3/8	0.811	0.673	1.020
1/2	1.000	0.839	1.236
3/4	1.059	1.051	1.461
1	1.311	1.315	1.791
1-1/4	1.323	1.661	2.244
1-1/2	1.378	1.902	2.520
2	1.500	2.374	2.992
2-1/2	1.811	2.874	3.622
3	2.000	3.500	4.299
4	2.252	4.500	5.512

**6000Lb**

1/8	1.130	0.283	0.866
1/4	1.130	0.402	0.984
3/8	1.130	0.532	1.260
1/2	1.252	0.654	1.496
3/4	1.441	0.835	1.732
1	1.559	1.063	2.244
1-1/4	1.619	1.409	2.520
1-1/2	1.665	1.622	2.992
2	2.059	2.031	3.622

1. Thread in Accordance with ASME B1. 20.1
2. 3000LB outlet size 4 and less fit a number of run pipe sizes and the fitting are marked accordingly.

unit: inch

Straight way			
OutLet Pipe (in)	A	C	F
<b>3000Lb</b>			
1/4	0.748	0.453	0.866
3/8	0.811	0.571	1.020
1/2	1.000	0.650	1.236
3/4	1.059	0.846	1.461
1	1.311	1.071	1.791
1-1/4	1.323	1.417	2.244
1-1/2	1.378	1.654	2.520
2	1.500	2.087	2.992
2-1/2	1.811	2.559	3.622
3	2.000	3.150	4.299
4	2.252	4.094	5.512

1. Thread in Accordance with ASME B1. 20. 1

unit: inch

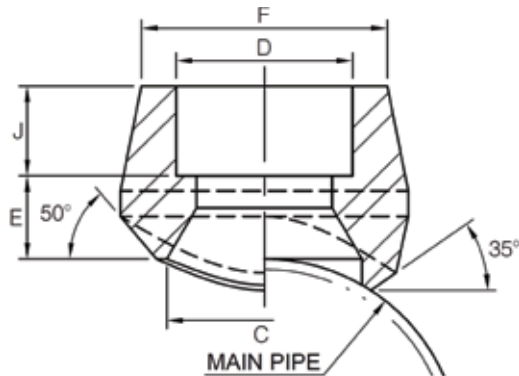
Reducing way			
OutLet Pipe (in)	A	C	F
<b>9000Lb</b>			
1/8	1.130	0.283	0.984
1/4	1.130	0.402	1.260
3/8	1.130	0.531	1.496
1/2	1.252	0.654	1.654
3/4	1.441	0.835	1.890
1	1.559	1.063	2.252
1-1/4	1.618	1.409	2.677
1-1/2	1.665	1.622	3.000
2	2.059	2.031	3.626



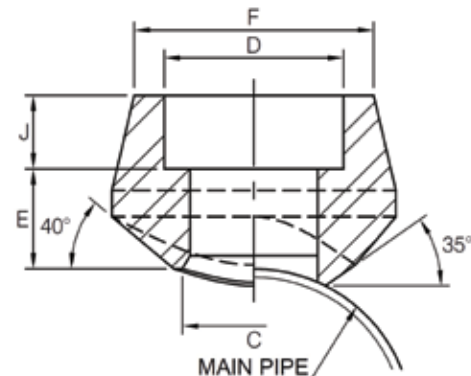
# ASTM A182 STAINLESS HIGH PRESSURE FITTINGS

## SOCKET WELDING END 90° BRANCH OUTLET

 **BOTH-WELL STEEL FITTINGS CO., LTD**  
MSS SP-97-2019



**REDUCING WAY**



**STRAIGHT WAY**

unit: inch

Reducing way					
OutLet Pipe (in)	C	D	F	J (Min)	E (Max)

**3000Lb**

1/8	0.539	0.425	0.866	0.374	0.433
1/4	0.539	0.559	0.866	0.374	0.433
3/8	0.673	0.693	1.020	0.374	0.512
1/2	0.839	0.858	1.236	0.374	0.630
3/4	1.051	1.071	1.461	0.492	0.630
1	1.315	1.335	1.791	0.492	0.906
1-1/4	1.661	1.681	2.244	0.492	0.906
1-1/2	1.902	1.921	2.520	0.492	0.945
2	2.374	2.409	2.992	0.630	0.945
2-1/2	2.874	2.909	3.622	0.630	1.024
3	3.500	3.535	4.299	0.630	1.220
4	4.500	4.535	5.512	0.748	1.220

**6000Lb**

1/8	0.283	0.425	0.866	0.374	0.748
1/4	0.402	0.559	0.984	0.374	0.748
3/8	0.531	0.693	1.260	0.374	0.748
1/2	0.654	0.858	1.496	0.374	0.945
3/4	0.835	1.071	1.732	0.492	1.024
1	1.063	1.335	2.244	0.492	1.142
1-1/4	1.409	1.681	2.520	0.492	1.220
1-1/2	1.622	1.921	2.992	0.492	1.260
2	2.031	2.409	3.622	0.630	1.457

1. Socket Dimension in Accordance with ASME B16.11.
2. 3000LB Outlet size 4 and less fit a number of run pipe sizes and the fitting are marked accordingly.

unit: inch

Straight way					
OutLet Pipe (in)	C	D	F	J (Min)	E (Max)

**3000Lb**

1/4	0.453	0.559	0.866	0.374	0.433
3/8	0.571	0.693	1.020	0.374	0.512
1/2	0.650	0.858	1.236	0.374	0.630
3/4	0.846	1.071	1.461	0.492	0.630
1	1.071	1.335	1.791	0.492	0.906
1-1/4	1.417	1.681	2.244	0.492	0.906
1-1/2	1.654	1.921	2.520	0.492	0.945
2	2.087	2.409	2.992	0.630	0.945
2-1/2	2.559	2.909	3.622	0.630	1.024
3	3.150	3.535	4.299	0.630	1.220
4	4.094	4.535	5.512	0.748	1.220

1. Socket Dimension in Accordance with ASME B16.11

unit: inch

Reducing way					
OutLet Pipe (in)	C	D	F	J (Min)	E (Max)

**9000Lb**

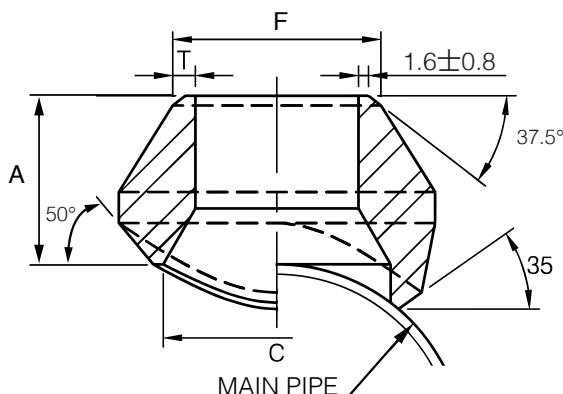
1/2	0.654	0.858	1.654	0.374	0.945
3/4	0.835	1.071	1.890	0.492	1.024
1	1.063	1.335	2.252	0.492	1.142
1-1/4	1.409	1.681	2.677	0.492	1.220
1-1/2	1.622	1.921	3.000	0.492	1.260
2	2.031	2.409	3.626	0.630	1.457



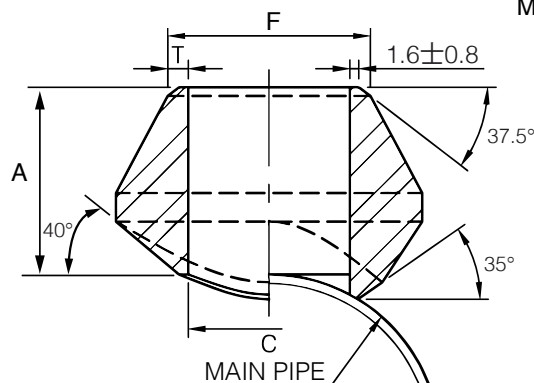
# ASTM A182 STAINLESS HIGH PRESSURE FITTINGS

## BUTT WELDING END 90° BRANCH OUTLET

 **BOTH-WELL STEEL FITTINGS CO., LTD**  
MSS SP-97-2019



**REDUCING WAY**



**STRAIGHT WAY**

### STANDARD

unit: inch

Reducing Way				
OutLet Pipe (in)	A	C	F	T
1/8	0.618	0.549	0.406	0.068
1/4	0.618	0.539	0.539	0.088
3/8	0.752	0.673	0.673	0.091
1/2	0.752	0.839	0.839	0.109
3/4	0.882	1.051	1.051	0.113
1	1.059	1.315	1.315	0.133
1-1/4	1.252	1.661	1.661	0.140
1-1/2	1.311	1.902	1.902	0.145
2	1.500	2.374	2.374	0.154
2-1/2	1.618	2.874	2.874	0.203
3	1.748	3.500	3.500	0.216
3-1/2	1.882	4.00	4.000	0.226
4	2.000	4.500	4.500	0.237
5	2.252	5.563	5.563	0.258
6	2.378	6.626	6.626	0.280
8	2.748	8.634	8.634	0.319
10	3.059	10.752	10.752	0.365
12	3.382	12.752	12.752	0.375
14	3.500	14.000	14.000	0.375
16	3.689	16.000	16.000	0.375
18	3.811	18.000	18.000	0.375
20	4.000	20.000	20.000	0.375
24	4.599	24.000	24.000	0.375

unit: inch

Straight Way				
OutLet Pipe (in)	A	C	F	T
1/4	0.618	0.453	0.539	0.088
3/8	0.752	0.571	0.673	0.091
1/2	0.752	0.650	0.839	0.109
3/4	0.882	0.846	1.051	0.113
1	1.095	1.071	1.315	0.133
1-1/4	1.252	1.417	1.661	0.140
1-1/2	1.311	1.654	1.902	0.145
2	1.500	2.087	2.374	0.154
2-1/2	1.618	2.559	2.874	0.203
3	1.311	3.150	3.500	0.216
4	2.000	4.094	4.500	0.237

1. Weld Bevel in accordance with ASME B16. 25.

1. Weld Bevel in accordance with ASME B16. 25.
2. Outlet size 4 and less fit a number of run pipe sizes and the fittings are marked accordingly.  
See page 63 for conventional run pipe size combination.
3. Outlet sizes 4 and up order to specific size combination.

### DIMENSIONAL TOLERANCE

MSS SP-97-2019

unit: inch

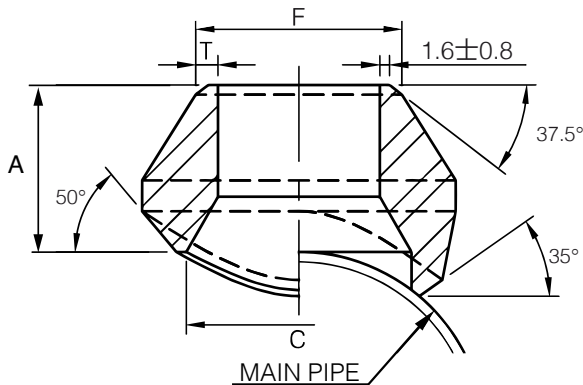
Item	1/8~3/4	1~4	5~12	14~24
Face of fitting to crotch (A)	±0.031	±0.063	±0.126	±0.189



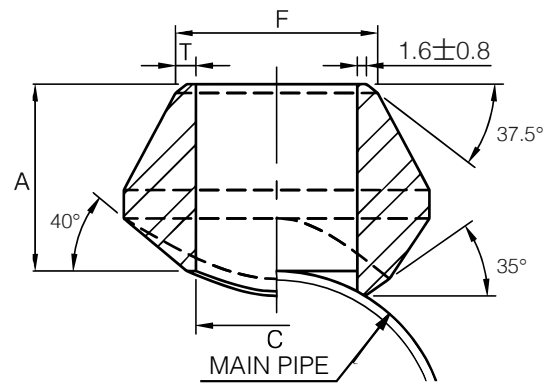


# ASTM A182 STAINLESS HIGH PRESSURE FITTINGS

## BUTT WELDING END 90° BRANCH OUTLET



**REDUCING WAY**



**STRAIGHT WAY**

### EXTRA STRONG

unit: inch

Reducing way				
OutLet Pipe (in)	A	C	F	T
1/8	0.618	0.549	0.406	0.095
1/4	0.618	0.539	0.539	0.119
3/8	0.752	0.673	0.673	1.126
1/2	0.752	0.839	0.839	0.147
3/4	0.882	1.051	1.051	0.154
1	1.059	1.315	1.315	0.179
1-1/4	1.252	1.661	1.661	0.191
1-1/2	1.311	1.902	1.902	0.200
2	1.500	2.374	2.374	0.218
2-1/2	1.618	2.874	2.874	0.276
3	1.748	3.500	3.500	0.300
3-1/2	1.882	4.000	4.000	0.337
4	2.000	4.500	4.500	0.377
5	2.252	5.563	5.563	0.375
6	3.059	6.626	6.626	0.432
8	3.882	8.634	8.634	0.500
10	3.689	10.752	10.752	0.500
12	4.059	12.752	12.752	0.500
14	3.941	14.000	14.000	0.500
16	4.181	16.000	16.000	0.500
18	4.378	18.000	18.000	0.500
20	4.689	20.000	20.000	0.500
24	5.500	24.000	24.000	0.500

unit: inch

Straight way				
OutLet Pipe (in)	A	C	F	T
1/4	0.618	0.539	0.539	0.119
3/8	0.752	0.673	0.673	0.126
1/2	0.752	0.839	0.839	0.147
3/4	0.882	1.051	1.051	0.154
1	1.095	1.315	1.315	0.179
1-1/4	1.252	1.661	1.661	0.191
1-1/2	1.311	1.902	1.902	0.200
2	1.500	2.374	2.374	0.218
2-1/2	1.618	2.874	2.874	0.276
3	1.748	3.500	3.500	0.300
4	2.000	4.500	4.500	0.337

1. Weld Bevel in accordance with ASME B16. 25.

1. Weld Bevel in accordance with ASME B16. 25.
2. Outlet size 4 and less fit a number of run pipe sizes and the fittings are marked accordingly.  
See page 63. for conventional run pipe size combination.
- (3) Outlet sizes 5 and up order to specific size combination.

### DIMENSIONAL TOLERANCE

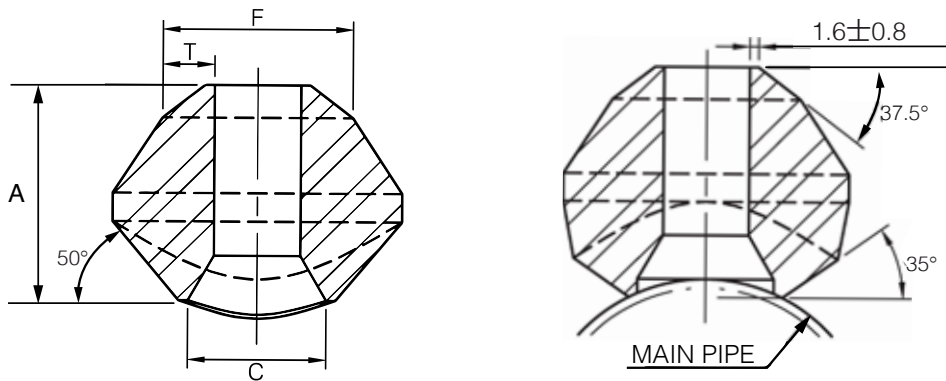
MSS SP-97-2019

unit: inch

Item	1/8~3/4	1~4	5~12	14~24
Face of fitting to crotch (A)	±0.031	±0.063	±0.126	±0.189

# ASTM A182 STAINLESS HIGH PRESSURE FITTINGS

## BUTT WELDING END 90° BRANCH OUTLET



SCHEDULE 160 & DOUBLE EXTRA STRONG

unit: inch

Reducing Way					
OutLet Pipe (in)	A	C	F	T	
				S160	XXS
1/2	1.118	0.543	0.839	0.188	0.294
3/4	1.252	0.744	1.051	0.219	0.308
1	1.500	0.957	1.315	0.250	0.358
1-1/4	1.748	1.280	1.661	0.250	0.382
1-1/2	2.000	1.500	1.902	0.281	0.400
2	2.181	1.937	2.374	0.344	0.436
2-1/2	2.411	2.323	2.874	0.375	0.552
3	2.882	2.902	3.500	0.438	0.600
4	3.311	3.827	4.500	0.531	0.674
5	3.689	4.811	5.563	0.625	0.750
6	4.118	5.764	6.626	0.719	0.864

1. Weld Bevel in accordance with ASME B16. 25.
2. Outlet size by order to specific size combination.

### CONVENTIONAL RUN PIPE SIZE COMBINATIONS

3000Lb THREAD/SOCKET-WELD END STD/XS BUTT WELDING END

unit: inch

		OUTLET SIZE										
		1/4	3/8	1/2	3/4	1	1-1/4	1-1/2	2	2-1/2	3	4
RUN SIZE (MAIN PIPE)	Reducing way	3/8~3/4 1~36	1/2 3/4~1-1/4 1-1/2~36	3/4 1 1-1/4 1-1/2~3	1 1-1/4 1-1/2 2~3 3-1/2~6 8~36	1-1/4 1-1/2 2 2-1/2 3~4 5~10 12~36	1-1/2 2 2-1/2 3 3-1/2~5 6~8 10~36	2 2-1/2 3 3-1/2 4~5 6~10 12~36	2-1/2 3 3-1/2 4 5~6 8~10 12~18 20~36	3 3-1/3 4 5 6 8 10~14 16~36	3-1/2 4 5 6 8 10 12~16 18~36	5 6 8 10 12~14 16~18 20~24 26~36
	Straight way	3/8~36	1/2~36	3/4~36	1~36	1-1/4~1-1/2 2~36	1-1/2 2~3 3-1/2~36	2 2-1/2~4 5~36	2-1/2 3~3-1/2 4~6 8~36	3 3-1/2~4 5~8 10~36	3-1/2 4 5 6 8~12 14~36	5 6 8 10 12~16 18~36

Each charted outlet size is designed to fit a number of run pipe sizes.

# ASTM A182 STAINLESS HIGH PRESSURE FITTINGS

## PACKING LIST

Carton Size: 28 x 20 x 18 cm (L x W x H)

Unit: PC

SIZE NPS	90° Elbow				45° Elbow				Tee				
	2MNPT 3M SW	3M NPT	6M SW	6M NPT	2MNPT 3M SW	3M NPT	6M SW	6M NPT	2MNPT 3M SW	3M NPT	6M SW	6M NPT	9M SW
1/4"	150	100	100	80	150	100	100	80	100	80	80	50	50
3/8"	100	80	80	50	100	80	80	50	80	50	50	35	35
1/2"	80	50	50	25	80	50	50	25	50	35	35	20	15
3/4"	50	25	25	20	50	30	30	20	35	20	20	12	15
1"	30	20	20	12	30	20	20	12	20	15	15	10	10
1-1/4"	20	15	15	5	20	15	15	5	15	10	10	5	6
1-1/2"	15	6	6	4	15	8	8	4	10	5	5	4	4
2"	8	5	5	2	10	6	6	2	6	4	4	2	2
2-1/2"	4	2	2	1	5	2	2	2	3	2	2	1	--
3"	2	2	1	1	2	2	1	1	2	1	1	1	--
4"	1	1	1	1	1	1	1	1	1	1	1	1	--

SIZE NPS	Cross				Full Coupling				Half Coupling			
	2MNPT 3M SW	3M NPT	6M SW	6M NPT	3M SW	3M NPT	6M SW	6M NPT	3M SW	3M NPT	6M SW	6M NPT
1/4"	40	40	80	40	350	250	250	200	400	800	300	150
3/8"	40	40	40	30	250	200	200	100	250	500	150	80
1/2"	40	30	30	20	120	100	100	60	120	250	80	80
3/4"	30	20	20	12	80	70	70	35	80	150	50	50
1"	20	12	12	6	50	35	35	20	50	80	30	35
1-1/4"	10	6	6	4	30	20	20	15	30	35	25	25
1-1/2"	6	4	4	2	25	15	15	10	25	30	15	20
2"	4	4	2	1	15	10	10	5	15	20	10	6
2-1/2"	2	1	--	--	10	5	5	3	10	12	5	4
3"	1	1	--	--	6	3	3	2	6	6	3	2
4"	--	--	--	--	4	2	2	1	4	4	--	1

SIZE NPS	Cap			Boss				Street Elbow		Insert	
	3M SW / NPT	6M SW	6M NPT	3M SW	3M NPT	6M SW	6M NPT	3M NPT	6M NPT	3M SW	6M SW
1/4"	300	200	250	250	200	200	150	150	80	300	250
3/8"	250	150	130	200	150	150	100	80	50	300	200
1/2"	130	80	80	90	80	80	60	50	25	150	120
3/4"	80	50	50	70	40	40	35	30	20	100	80
1"	50	30	30	35	30	30	20	20	12	80	60
1-1/4"	30	25	25	30	20	20	15	15	5	60	50
1-1/2"	25	15	15	25	15	15	10	8	4	40	40
2"	15	8	10	15	10	10	5	5	2	25	20
2-1/2"	10	5	4	10	5	--	--	4	--	12	10
3"	4	3	3	6	3	--	--	2	--	10	8
4"	3	2	2	4	2	--	--	1	--	4	2

SIZE NPS	Outlet		Union		Hex Plug	Round Plug	Square Plug	Bushing	Hex Nipple	Swage Nipple
	3M SW / NPT	6M SW / NPT	3M SW / NPT	6M SW / NPT	NPT	NPT	NPT	NPT	NPT	S40 / S80 S160 / XXS
1/4"	200	100	70	--	800	250	800	600	500	200
3/8"	150	100	70	50	600	200	600	500	400	150
1/2"	150	100	50	30	250	150	300	400	200	100
3/4"	100	50	30	20	150	100	200	200	100	70
1"	50	30	20	14	100	80	150	100	65	50
1-1/4"	35	25	14	10	35	50	80	60	35	30
1-1/2"	25	15	10	6	25	30	50	50	25	20
2"	15	10	6	2	20	15	30	25	15	8
2-1/2"	10	5	2	--	8	10	15	15	5	4
3"	6	2	2	--	6	5	10	10	3	3
4"	3	1	1	--	3	3	3	5	2	1

PLYWOOD CASE SIZE: 109 x 94 x 86 cm / 60 Carton  
 PLYWOOD CASE SIZE: 93 x 90 x 68 cm / 36 Carton

PLYWOOD CASE SIZE: 93 x 90 x 86 cm / 48 Carton



unit: lb / pc

SIZE	1/8"	1/4"	3/8"	1/2"	3/4"	1"	1-1/4"	1-1/2"	2"	2-1/2"	3"	4"
<b>3000 LBS SCREWED</b>												
90° ELBOW	0.22	0.31	0.59	0.90	1.59	2.27	2.89	4.87	5.44	9.98	17.11	29.23
45° ELBOW	0.18	0.26	0.53	0.75	1.19	2.03	2.14	4.05	4.25	7.62	11.98	19.74
TEE	0.29	0.29	0.84	1.23	1.85	3.74	4.30	7.00	8.00	13.74	20.99	37.97
COUPLING	0.11	0.11	0.13	0.29	0.42	0.86	1.50	2.18	3.02	4.56	6.78	11.98
HALF COUPLING	0.07	0.07	0.07	0.13	0.22	0.44	0.75	1.10	1.50	2.27	3.39	5.99
CAP	0.09	0.09	0.11	0.24	0.40	0.77	1.32	1.54	2.33	4.05	5.84	10.07
STREET ELBOW	0.22	0.31	0.59	0.90	1.45	2.14	2.89	4.87	5.44			
UNION	0.62	0.62	0.62	0.68	1.01	1.48	2.27	3.33	5.35	7.67	11.56	26.43
<b>6000 LBS SCREWED</b>												
90° ELBOW	0.37	0.66	0.99	1.59	2.53	3.55	5.88	7.05	13.00	21.76	36.19	
45° ELBOW	0.24	0.59	0.86	1.34	2.25	2.58	5.88	5.75	9.63	15.44	31.19	
TEE	0.44	0.93	1.39	2.16	3.63	4.82	7.75	9.74	17.36	28.88	49.56	
COUPLING	0.18	0.13	0.40	0.68	0.90	1.87	2.31	4.12	7.49	9.25	13.44	22.11
HALF COUPLING	0.09	0.09	0.20	0.35	0.44	0.95	1.17	2.00	3.74	4.63	6.72	11.06
CAP	0.13	0.13	0.20	0.31	0.44	0.75	1.30	1.70	3.24			
<b>PLUG &amp; BUSHING 3000 / 6000 LBS</b>												
SQUARE HEAD	0.02	0.02	0.07	0.11	0.20	0.35	0.59	0.84	1.39	2.11	3.37	8.44
HEX HEAD	0.02	0.07	0.11	0.15	0.31	0.55	1.04	1.37	2.42	3.81	4.74	13.00
ROUND HEAD	0.04	0.11	0.15	0.26	0.44	0.75	1.21	1.59	3.11	4.87	7.18	13.24
BUSHING		0.02	0.02	0.07	0.11	0.20	0.55	0.75	0.99	1.32	2.56	7.05
<b>3000 LBS SCREWED WELD</b>												
90° ELBOW	0.20	0.22	0.22	0.48	0.68	1.17	1.59	2.14	3.77	8.37	12.11	24.12
45° ELBOW	0.15	0.13	0.20	0.44	0.57	0.88	1.41	1.70	2.69	7.86	11.23	20.73
TEE	0.24	0.20	0.33	0.70	0.93	1.43	2.18	2.97	4.56	8.59	13.00	31.28
COUPLING	0.09	0.11	0.15	0.29	0.42	0.59	1.08	1.30	2.14	3.13	4.14	7.29
HALF COUPLING	0.09	0.11	0.15	0.29	0.42	0.59	1.08	1.30	2.14	3.13	4.14	7.29
CAP	0.07	0.09	0.11	0.22	0.35	0.48	2.89	1.12	1.87	2.73	4.27	7.29
UNION	0.62	0.62	0.62	0.68	1.01	1.48	2.27	3.33	5.35	7.67	11.56	26.43
<b>6000 LBS SCREWED WELD</b>												
90° ELBOW				0.88	1.39	2.62	3.00	5.31	5.99	10.46	18.83	31.52
45° ELBOW				0.66	1.26	1.94	2.44	4.43	4.74	8.92	13.26	24.60
TEE				1.19	1.94	3.17	4.07	7.20	7.93	15.29	23.37	37.27
COUPLING				0.53	0.73	1.43	1.65	2.64	4.67	6.30	8.83	13.99
HALF COUPLING				0.53	0.73	1.43	1.65	2.64	4.67	6.30	8.83	13.99
CAP				0.42	0.57	1.17	1.41	2.14	3.61	4.89	7.60	13.28

WEIGHT LIST

ASTM A182 STAINLESS HIGH PRESSURE FITTINGS

